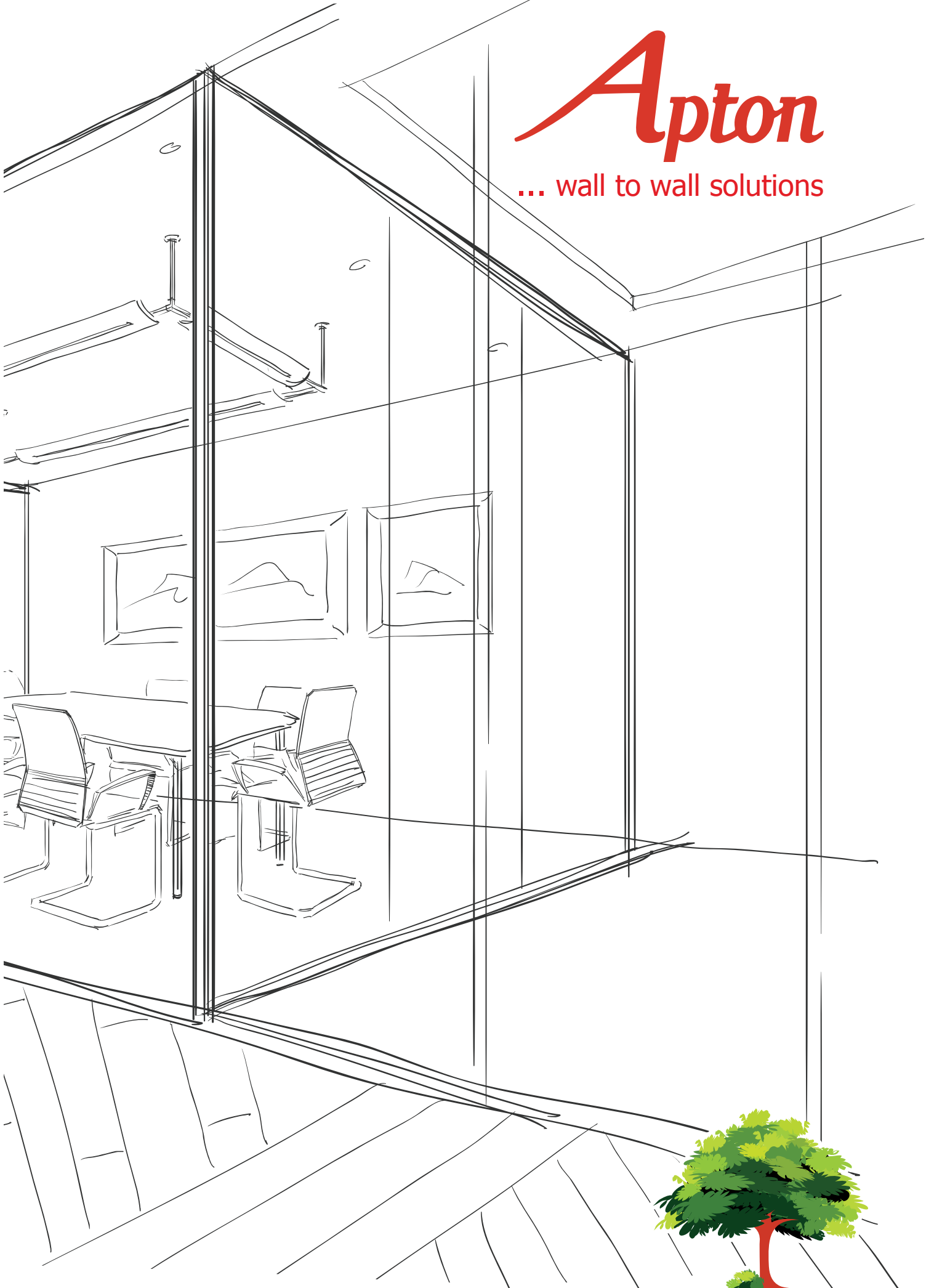


# Apton

... wall to wall solutions



*Apton*



# Inspire

## 75mm Versatile Partitioning System

Inspire is a convenient and modern 75mm on-site glazing solution with a host of valuable benefits including fire resistant up to 30 minutes, outstanding acoustic performance up to 44Rw(dB) and superb design.

It is available as single offset or double-glazed and has the option of square or radius junction posts and doorframe profiles.

There is a further choice of timber, glass or GDS double glazed doors along with a selection of joints and detailing to suit your needs.

It is designed to be simple and quickly demounted and re-installed, ensuring minimal site disruption to any relocation.

Inspire comprises of an inner framework of steel studs and channels, finished with aluminum cladding profiles and top hat trims between modules. Solid panels are available in a choice of veneered MFC or vinyl plasterboard can be full height or in combination with single and double glazed full height, half height or panel format windows to provide the aesthetic of choice.



# Inspire

75mm Versatile Partitioning System

## Double Glazed

Look no further for the ultimate in transparency, flexibility and performance to meet your workplace requirements. The contemporary Inspire partitioning system will fulfil your ambitions, compliment your corporate image and promote your professionalism. It is designed to impress, protect and inspire.



## Versatility

Inspire is our premier 75mm versatile relocatable partitioning system for on-site glazing. It is designed to be simple and quickly demounted and re-installed, ensuring minimal site disruption to any relocation. With its smooth detailing and clever performance, Inspire creates both contemporary and vibrant schemes.



# Inspire

75mm Versatile Partitioning System

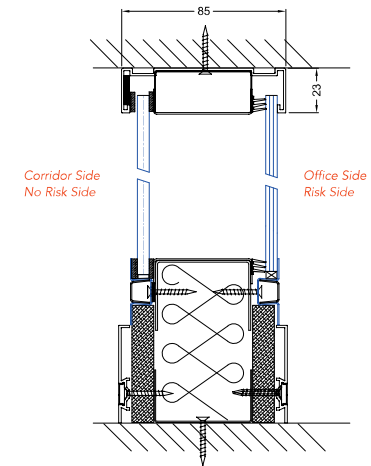
# Inspire

Fire rated systems

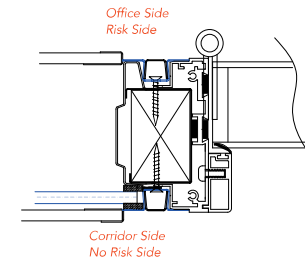
Inspire is a modern relocatable partition system which combines a range of innovative options and aesthetic appearance with ease of alteration. Inspire achieves fire resistance to FR30/0 using 6mm fire resistant glass to one side of the partition and a choice of toughened glass from 6mm to 10mm to the other side depending on the acoustic requirement. European fire resistance specification Class 'E', (Integrity).



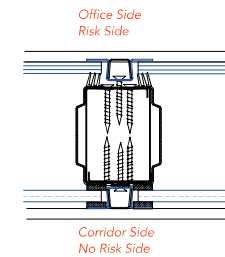
## Fire Rated Systems Technical specifications



Inspire 30/0 double glazed system



Inspire 30/0 door frame

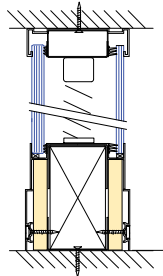


Inspire 30/0 double glazed mullion detail

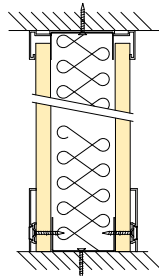
## Non Fire Rated Systems Technical specifications



Double glazed channel with integral venetian blinds



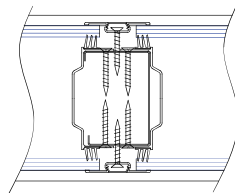
Full height double glazed with venetian blinds



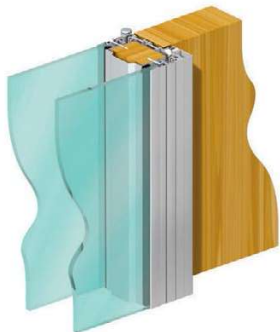
Full height solid



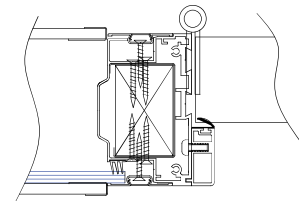
Double glazed mullion



Double glazed mullion



Double glazed door frame



Single glazed to door jamb

# Inspire



## Technical Data

Inspire is a modern fully relocatable partition system, which combines a range of innovative options and aesthetic appearance with ease of alteration. Inspire achieves high levels of acoustic performance and fire resistance and is complemented by a range of aesthetic options.

### STRUCTURE

#### Partitions:

**Standard Heights:** Up to 4 metres.

**Tracks:** Polyester powder coated aluminium head and abutment track 85mm x 23mm. Base 50mm, 75mm or 100mm skirting.

**Corners:** Snap-in interchangeable 90° and 135° corners and three way junction sections allow alteration without dismantling.

**Dimensions:** Overall thickness is 75mm across panel faces. Maximum full height panel width is 1200mm.

**Glass:** Toughened glass from 6mm to 10mm.

**Joints:** Top hat trims or tape and filled joints.

**Blinds:** Manually operated 25mm tilt & turn venetian blinds which are recessed or between double glazing.

### DOOR SETS

**Options:** Glass, timber or double glazed GDS doors complement the Inspire system.

**Solid doors:** Timber doors are 44mm solid core in a choice of veneers.

**Door frames:** Aluminium and are either full height or universal standard height. Single or double doorsets are available.

A range of ironmongery can be supplied with Inspire doors.

### FINISHES

All exposed aluminium sections are pre-finished with a polyester powder coating in a range of RAL colours.

### SIZE LIMITS

Inspire is designed for installation in areas up to 4 metres high.

### ASSEMBLY CHARACTERISTICS

The Inspire system comprises an inner framework of steel studs and channels, finished with aluminium cladding profiles and omega trims between modules.

Solid panels in a choice of veneered MFC or vinyl plasterboard can be full height or in combination with single and double glazed full height, half height or panel format windows to provide the aesthetic of choice.

### PERFORMANCE

**Fire resistance:** FR30/0 to BS476 part 22.

**Sound reduction:** BS EN ISO 140; Rated weighting to BS EN ISO 717.

**Acoustics:** Single glazed 34Rw(dB), double glazed 43Rw(dB) and solid 44Rw(dB).

**Structural:** BS5234, BS6180 and BS6399. Commercial office (BS medium duty).

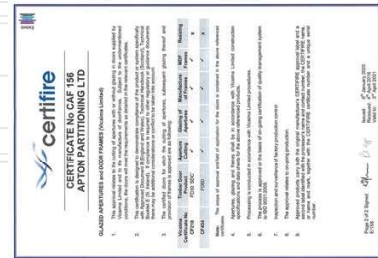


Inspire is designed and manufactured by Apton Partitioning Limited in the UK.

### Apton Systems Environmental Policy

Here at Apton Systems we have always regarded protection of the environment as an important issue and are committed to ensuring that in manufacturing our partitions we do not cause unnecessary environmental harm.

- 1) Apton comply with the Environmental Protection Act 1990 when disposing of Flammable materials, lead and lead compounds, acids and alkalis, metallic and non metallic compounds.
- 2) The paints and lacquers used by Apton are T.I.G and lead free and are applied using the latest energy conservation technology, in our own paint plant.
- 3) Our Timber is supplied by companies who are members of 'Forests Forever', the environmental division of the Timber Trade Federation and are therefore taking active steps to safeguard the world's forests. These companies only source from suppliers who are operating in accordance with the laws of their county with regard to deforestation.
- 4) Our partition systems are almost 100% recyclable and by their very nature are relocatable and if maintained properly, can be reinstalled again and again. All the Steel and Aluminium components can be reclaimed as scrap metal at the end of the product life.
- 5) As an alternative to expensive glass etching Apton recommend translucent manifestations, which are not only cheaper, but are far more environmentally friendly to produce.
- 6) Apton have an annual audit by IFC (International Fire Consultants), to comply with and obtain Third Party Accreditation for our fire related system.



**Apton Partitioning Limited –United Kingdom**

Unit 3 Cannon Business Park Gough Road Coseley West Midlands WV14 8XR

Tel: +44 (0) 1902 385 250

Fax: +44 (0) 1902 385 255

Email: [enquiries@apton-partitioning.com](mailto:enquiries@apton-partitioning.com)

[www.apton-partitioning.com](http://www.apton-partitioning.com)

